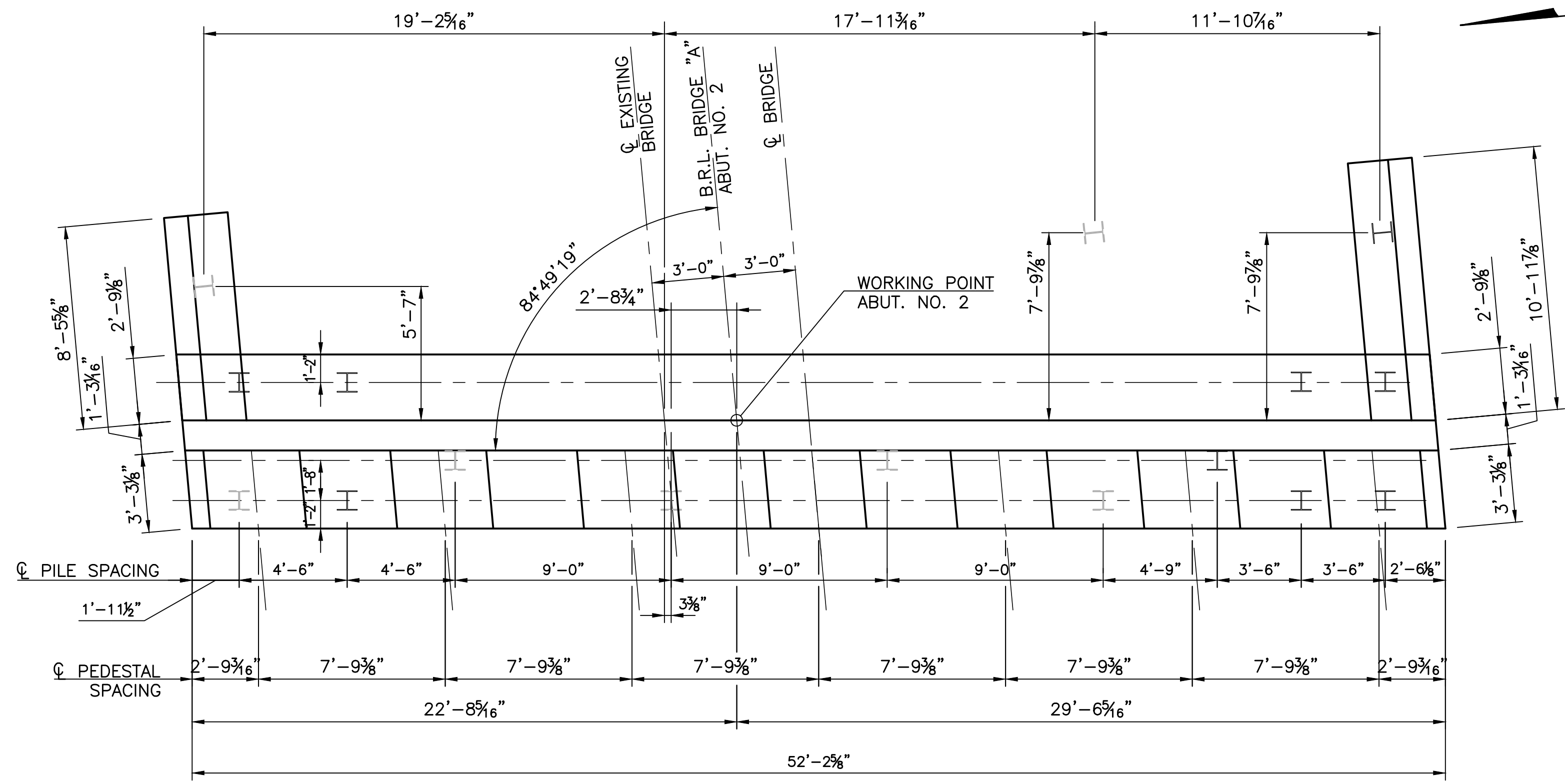
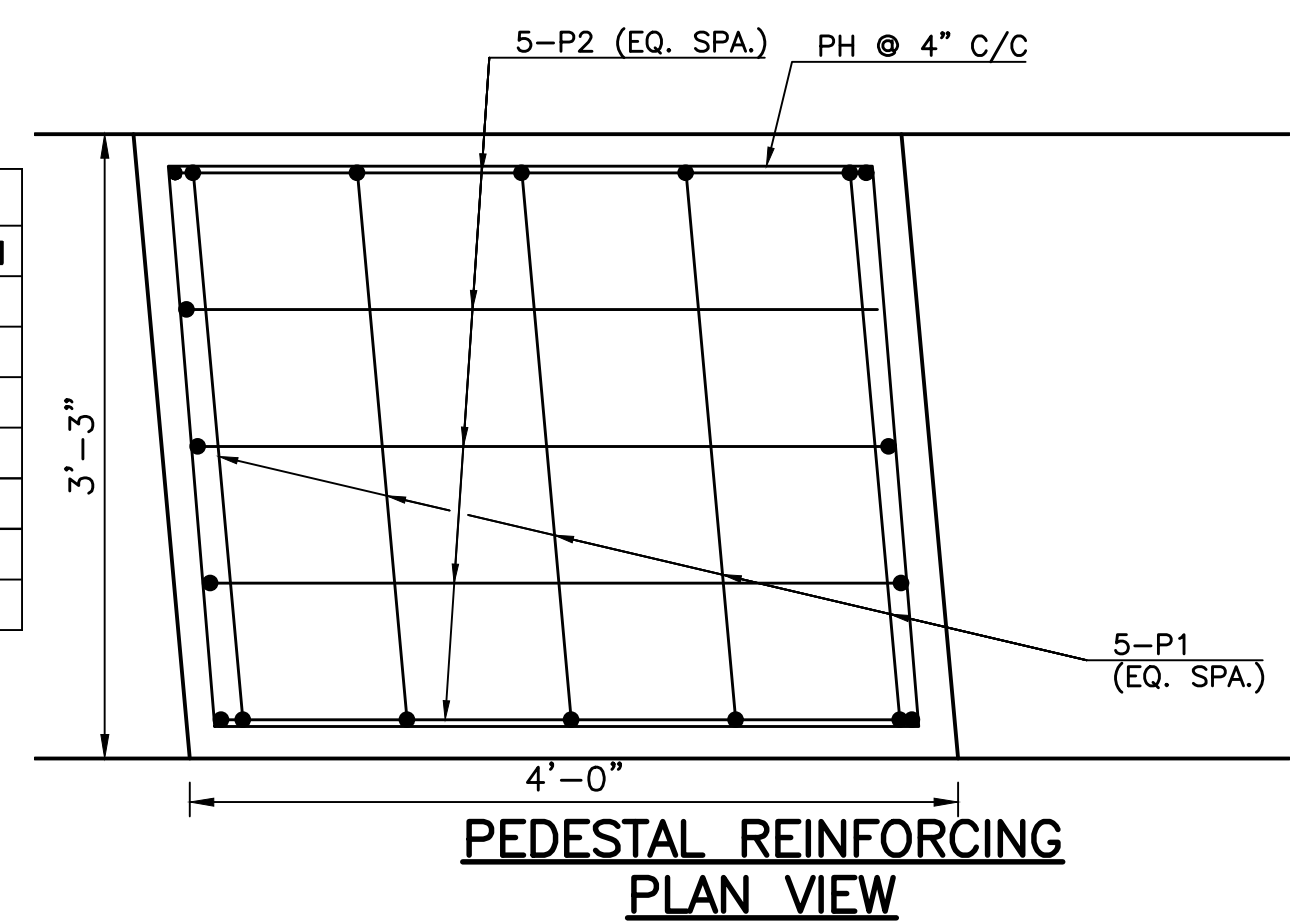


BRIDGE "A" ABUT. NO. 2	
POINT	PEDESTAL ELEVATION
A	675.19
B	675.53
C	675.87
D	676.21
E	676.55
F	676.88
G	677.22

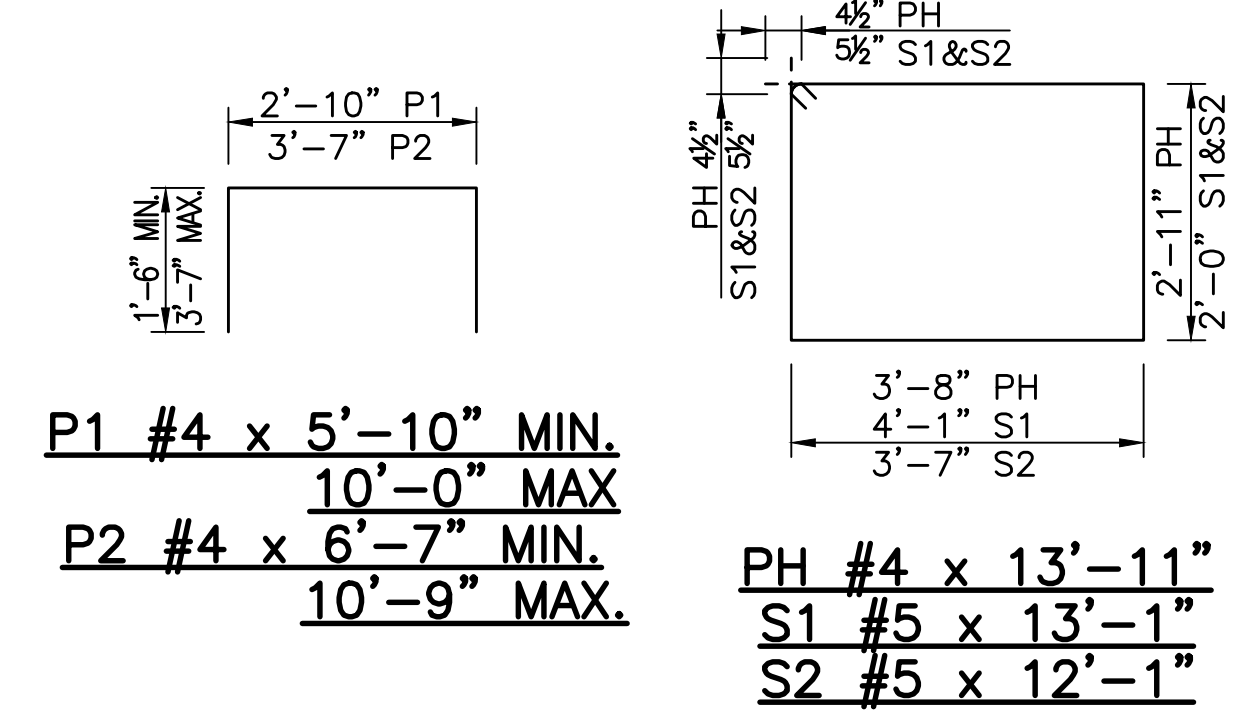
REVISIONS		
REV. NO.	DESCRIPTION	DATE



PLAN

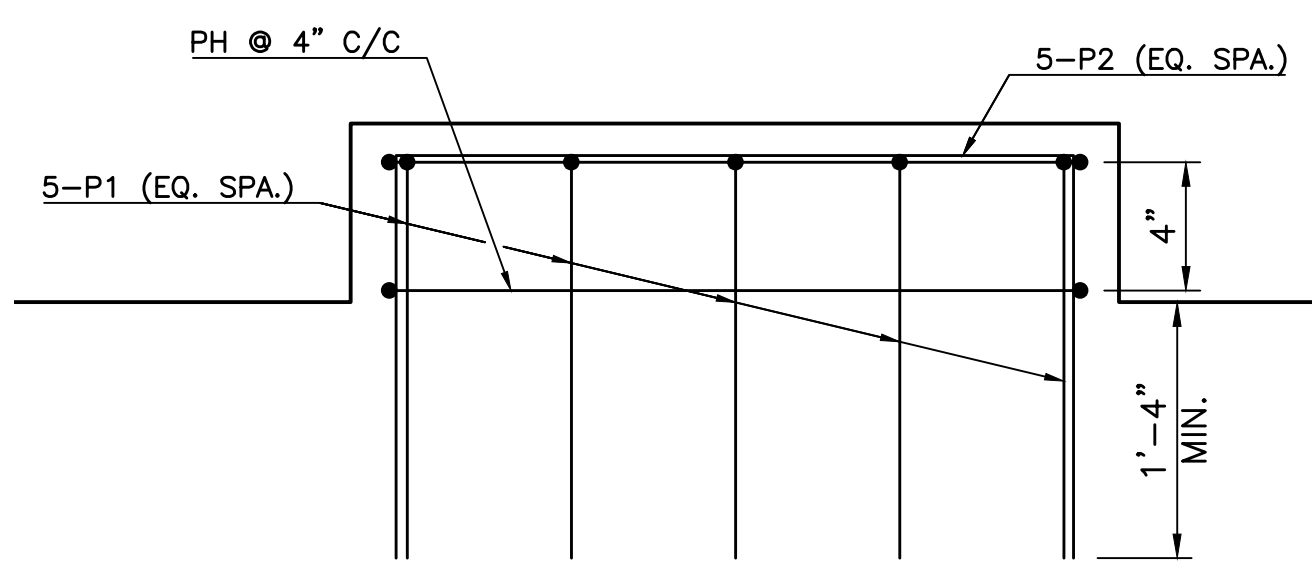


PEDESTAL REINFORCING PLAN VIEW

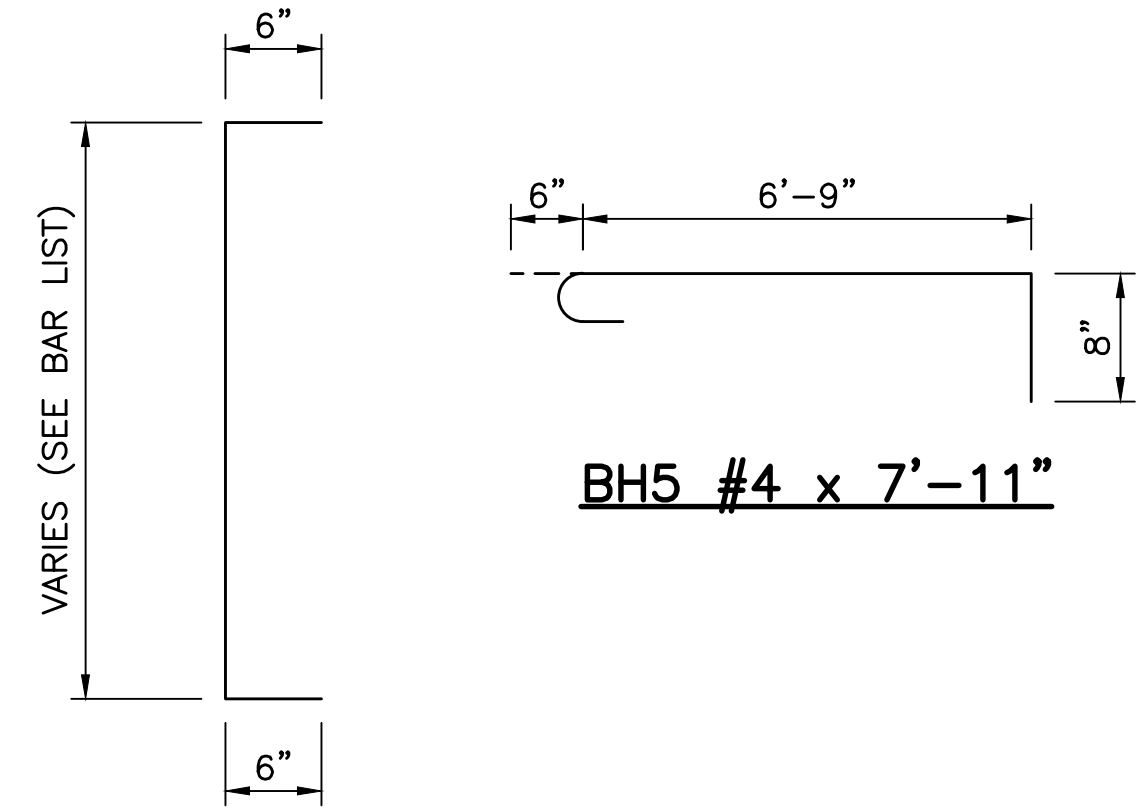


P1 #4 x 5'-10" MIN.  
10'-0" MAX  
P2 #4 x 6'-7" MIN.  
10'-9" MAX.

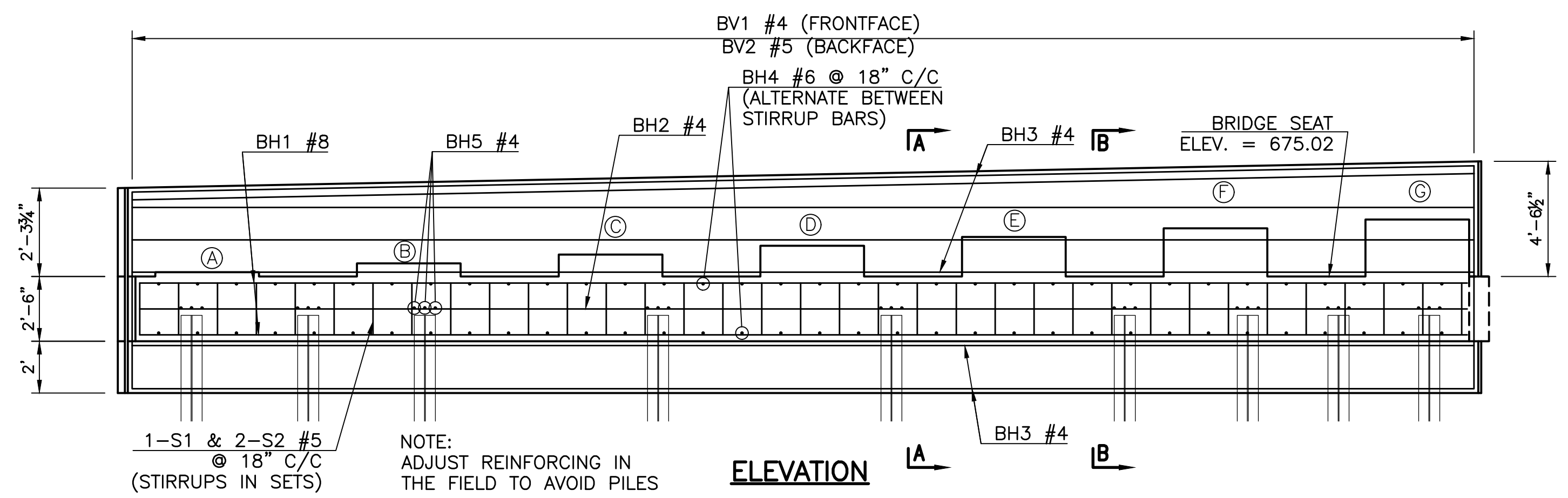
PH #4 x 13'-11"  
S1 #5 x 13'-1"  
S2 #5 x 12'-1"



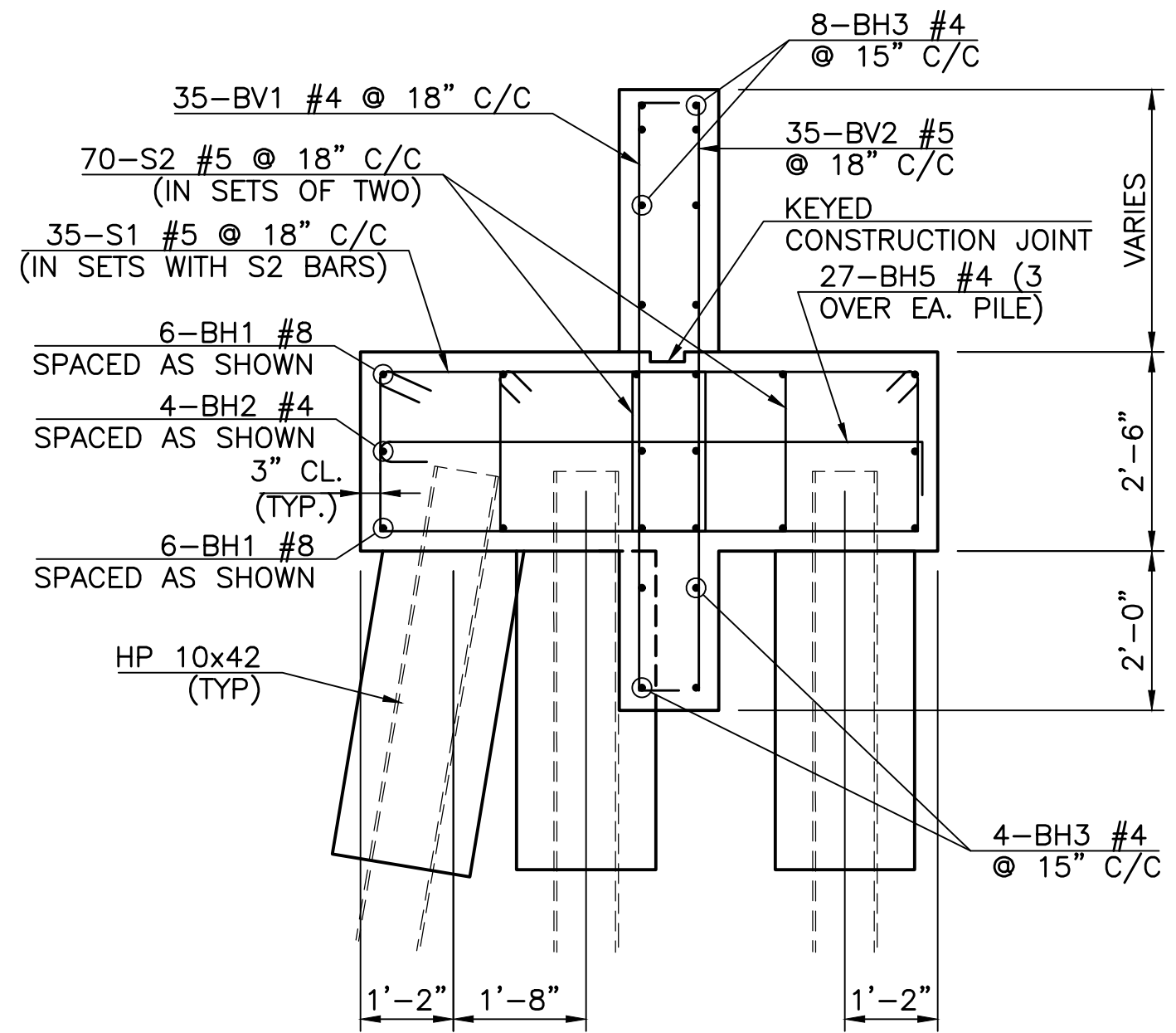
SECTION A-A



SECTION B-B  
(OTHER BARS SAME AS SECTION A-A)



ELEVATION



BRIDGE "A" ABUTMENT 2 QUANTITIES		
ITEM	UNIT	TOTAL
CLSM BACKFILL	C.Y.	10.0
CLASS A CONCRETE	C.Y.	60.9
EPOXY COATED REINFORCING STEEL	LB.	7,116.4
PILES, FURNISHED (HP10X42)	L.F.	426.0
PILES, DRIVEN (HP10X42)	L.F.	426.0
WATER REPELLENT (VISUALLY INSPECTED)	S.Y.	74.1

BRIDGE "A" ABUTMENT 2 BAR LIST						
MARK	SIZE	FORM	NUMBER	LENGTH	LENGTH VARIATION	
EPOXY COATED						
BH1	#8	STR.	12	51'-9"		
BH2	#4	STR.	4	51'-9"		
BH3	#4	STR.	12	51'-9"		
BH4	#6	STR.	68	6'-9"		
BH5	#4	BNT.	27	7'-11"		
S1	#5	BNT.	35	13'-1"		
S2	#5	BNT.	70	12'-1"		
BV1	#4	BNT.	35	8'-4" AVG	7'-1" TO 9'-7"	
BV2	#5	STR.	35	7'-4" AVG	6'-1" TO 8'-7"	
P1	#4	BNT.	30	7'-11" AVG	5'-10" TO 10'-0"	
P2	#4	BNT.	30	8'-8" AVG	6'-7" TO 10'-9"	
PH	#4	BNT.	15	13'-11"		

DESIGN	MW	11/16	TULSA COUNTY OKLAHOMA DEPARTMENT OF TRANSPORTATION <b>DETAILS OF BRIDGE "A" ABUTMENTS          (ABUT. NO. 2)</b> STATE JOB NO. 28884(04) SHEET NO. 39
DRAWN	SDK	11/16	
CHECKED	HRA	11/16	
APPROVED			
WALTER P MOORE			

V:\MISC\2012\2000-07\_0001\_EC-1414\_US-44\_Bridg\_3\Civil\3D\3D\3D-42-412-2000-07-ABUTMENTS.dwg Job: 13, 2017 - 8/17/2017